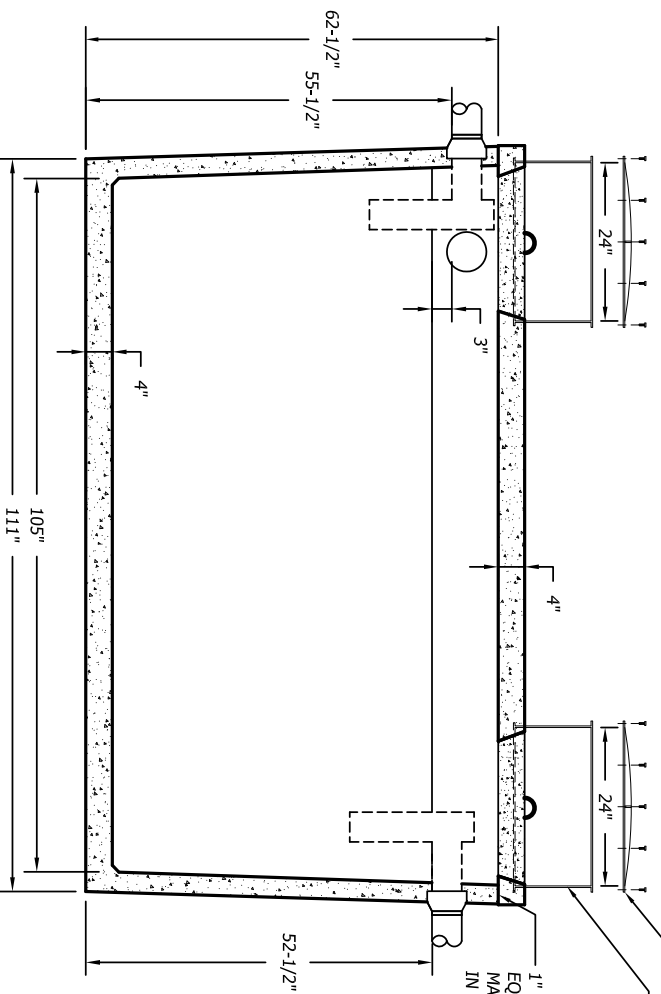


4" BOOTED PENETRATION (TYP.)

**TOP**



SCREW ON LID  
24" DIAMETER ONSITE SEPTIC SOLUTIONS RISER, HEIGHT AS REQUIRED

1" NOMINAL DIAMETER OR EQUIVALENT BUTYL RUBBER MASTIC SEALANT CONTINUOUS IN JOINT

**SECTION**

- SPECIFICATIONS:**
1. THE SEPTIC TANK MUST BE EQUIPPED WITH AN EFFLUENT FILTER THAT HAS BEEN TESTED AND SHOWN TO PREVENT THE PASSAGE OF SOLIDS LARGER THAN 1/8 INCH.
  2. CAPACITY = 1,505 GALLONS
  3. FULL CAPACITY = 1815 GALLONS
  4. GALLONS PER INCH = 31.03 (AVERAGE)
  5. WEIGHT = 11,400 POUNDS
  6. MAXIMUM OF 3 FEET OF COVER
  7. TANK TO MEET ASTM 1227/C REQUIREMENTS
  8. TOP SEAM CONSTRUCTION
  9. JOINT SEALANT IS BUTYL RUBBER MASTIC TYPICAL OF CONSEAL CS-102.
  10. NOT DESIGNED FOR TRAFFIC AREAS
  11. ALL DIMENSIONS SHOW ARE PER ONSITE SEPTIC SOLUTIONS, LLC PRODUCTS 2011.

**1,500 GALLON (2 COMPARTMENT) TOP SEAM PRECAST CONCRETE SEPTIC TANK**

1/2" = 1'-0"



BUSINESS PARK AT CAMBRIDGE  
CAMBRIDGE, VT. 05444  
paul@onstesepticsolutions.biz  
TEL. 802-644-5500