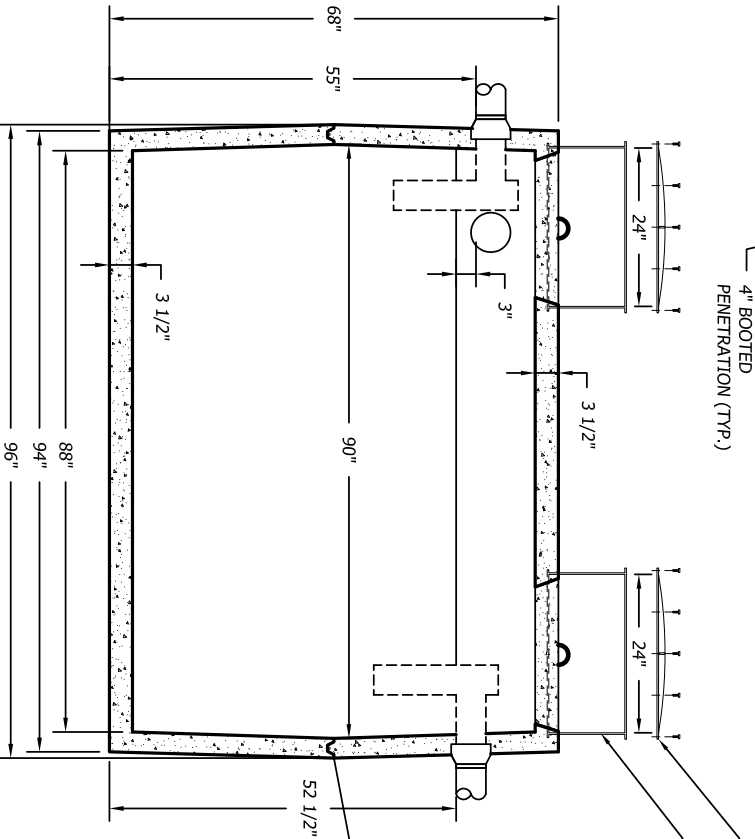
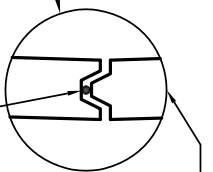


**TOP**



**SECTION**



JOINT DETAIL OF MACHINE GROOVE BASE

1" NOMINAL DIAMETER OR EQUIVALENT BUTYL RUBBER MASTIC SEALANT CONTINUOUS IN JOINT O-RING ENVIRONMENT TO KEEP SEALANT TRAPPED

- SPECIFICATIONS:**
1. THE SEPTIC TANK MUST BE EQUIPPED WITH AN EFFLUENT FILTER THAT HAS BEEN TESTED AND SHOWN TO PREVENT THE PASSAGE OF SOLIDS LARGER THAN 1/8 INCH.
  2. CAPACITY = 1,039 GALLONS WITH 12" AIR SPACE
  3. FULL CAPACITY = 1,294 GALLONS
  4. GALLONS PER INCH = 21.22 (AVERAGE)
  5. WEIGHT = 9,400 POUNDS
  6. MAXIMUM OF 3 FEET OF COVER
  7. TANK TO MEET ASTM 1227C REQUIREMENTS
  8. MID SEAM CONSTRUCTION
  9. JOINT SEALANT IS BUTYL RUBBER MASTIC TYPICAL OF CONSEAL CS-102.
  10. NOT DESIGNED FOR TRAFFIC AREAS
  11. ALL DIMENSIONS SHOW ARE PER ONSITE SEPTIC SOLUTIONS, LLC PRODUCTS 2011.

**1,000 GALLON MID SEAM PRECAST CONCRETE SEPTIC TANK**

1/2"=1'-0"



BUSINESS PARK AT CAMBRIDGE  
CAMBRIDGE, VT. 05444  
paul@onsitesepanticsolutions.biz  
TEL. 802-644-5500