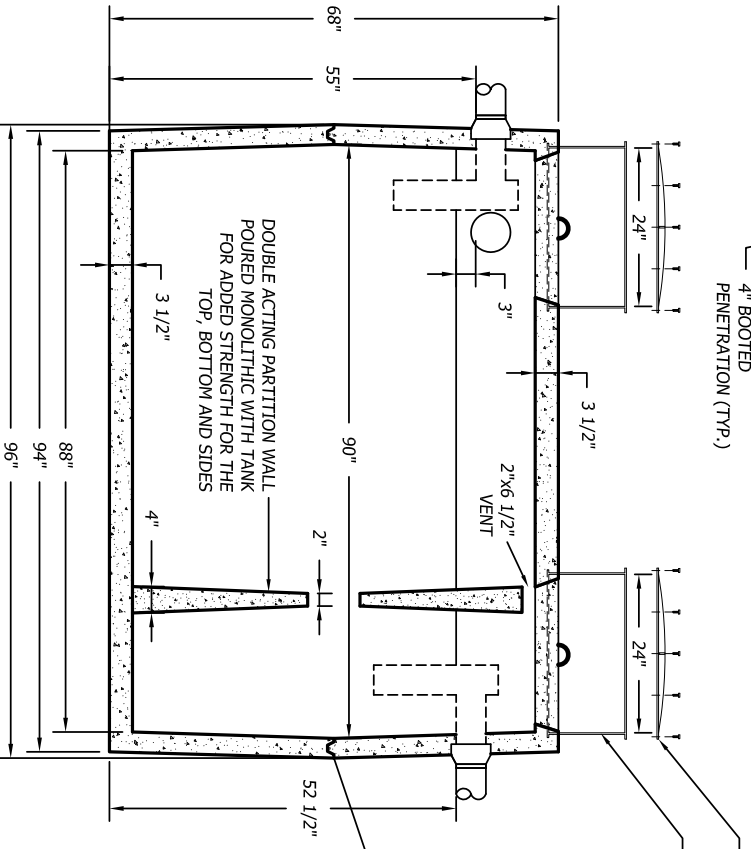
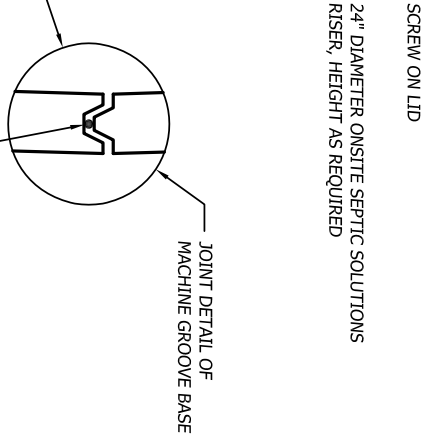


PLAN



SECTION

- SPECIFICATIONS:**
1. THE SEPTIC TANK MUST BE EQUIPPED WITH AN EFFLUENT FILTER THAT HAS BEEN TESTED AND SHOWN TO PREVENT THE PASSAGE OF SOLIDS LARGER THAN 1/8 INCH.
 2. CAPACITY = 1,039 GALLONS WITH 12" AIR SPACE
 3. FULL CAPACITY = 1,294 GALLONS
 4. GALLONS PER INCH = 21.22 (AVERAGE)
 5. WEIGHT = 9,400 POUNDS
 6. MAXIMUM OF 3 FEET OF COVER
 7. TANK TO MEET ASTM 1227C REQUIREMENTS
 8. MID SEAM CONSTRUCTION
 9. JOINT SEALANT IS BUTYL RUBBER MASTIC TYPICAL OF CONSEAL CS-102.
 10. NOT DESIGNED FOR TRAFFIC AREAS
 11. ALL DIMENSIONS SHOW ARE PER ONSITE SEPTIC SOLUTIONS, LLC PRODUCTS 2011.



1" NOMINAL DIAMETER OR EQUIVALENT BUTYL RUBBER MASTIC SEALANT CONTINUOUS IN JOINT
O-RING ENVIRONMENT TO KEEP SEALANT TRAPPED

1,000 GALLON 2 COMPARTMENT MID SEAM PRECAST CONCRETE SEPTIC TANK

1/2"=1'-0"



BUSINESS PARK AT CAMBRIDGE
CAMBRIDGE, VT. 05444
paul@onsitesepanticsolutions.biz
TEL. 802-644-5500